

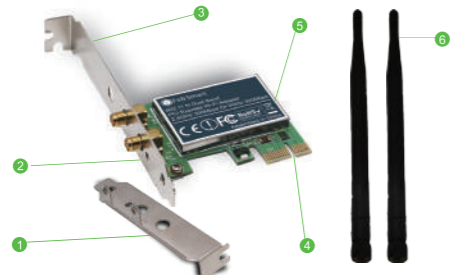


PCI Express Wireless Dual Band Wi-Fi Adapter

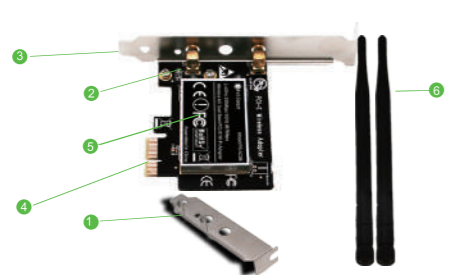
Model : •FS-N600 •FS-AC86

Official Site:www.febsmart.com Tech-support:support@febsmart.com

FS-N600 PCI Express (PCI-E) Dual Band Wireless N 600Mbps(2.4GHz 300Mbps or 5GHz 300Mbps) Wi-Fi Adapter



FS-AC86 Wireless AC Dual Band 1200Mbps(2.4GHz 300Mbps or 5GHz 867Mbps) PCI Express (PCI-E) Wi-Fi Adapter



- 1 Low profile bracket
- 2 Activity Indicator
- 3 Standard profile bracket
- 4 PCI express interface
- 5 Heat sink
- 6 2XWi-Fi antenna

1

FS-N600 Product Description:

FS-N600 is a high performance PCI Express Wireless Adapter; Select by Qualcomm Atheros Network Solution; Offers super speed and stable wireless connection on PCs, Working stations by on board PCI Express Slot. Allow connected device get a max 300Mbps throughput data speed on 2.4GHz or 5GHz. It's a easy and low cost way to add desktop PCs or Working Stations on Wireless for internet surfing, file downloading, online gaming and HD video streaming.

Product Tech Data:

Power consumption: 2.85Watts
Wireless Signal: 2x2 802.11n 2-Stream MIMO
Compatible PCs: Standard PC and Mini Size PCs
Max Wi-Fi Speed: 2.4GHz 300Mbps or 5GHz 300Mbps
Antennas: 2X5dBi external detachable dual band antenna
Working Mode: Wi-Fi Adapter (Receiver) and Wireless AP
Wireless Standard: IEEE802.11N, backward compatible IEEE 802.11 a/b/g/ ac
Hardware Interface: PCI-E 2.0 X1, Works on PCIE X1, X4, X8, X16 slot,PCIE 1.X,2.X,3.X

System Requirements:Linux Driver: ATH9K (Provide driver link only),Driver Free on Windows 8, Windows 8.1, Windows 10 (32/64bit).Need driver on Windows Server, Windows XP, Windows 7(32/64bit).

Package List:

1X FS-N600;1X Mini CD; 1X User Manual;1XMounting Screw;2X 3dBi Antennas; 1X Low Profile Bracket

2

FS-AC86 Product Description:

FS-AC86 is a wireless AC1200Mbps dual band PCI Express (PCI-E) WiFi Adapter. It offers Ultra fast speed, stable and few loss wireless connectivity at 2.4GHz 300Mbps and 5GHz 867Mbps max throughput on PCs for internet surfing, online gaming and Pro HD video streaming for home and office use.

Product Tech Data:

Main Chip: Qualcomm Atheros QCA61X4A;
Wireless Signal:2x2 802.11AC 2-Stream MIMO;
Working Mode: Wi-Fi Adapter (Receiver) and Wireless AP
Operation Frequency: Operation Frequency: 5GHz and 2.4GHz;Wireless Standard: IEEE802.11AC, backward compatible a/b/g/n;Compatible Device: Standard and Mini Size PCs (Working stations);Antennas: 2X5dBi omni-directional external detachable dual band antenna
Max Wi-Fi Speed: 2.4GHz 40MHz 300Mbps (802.11AC/N), 5GHz 80MHz 867Mbps (802.11AC); 40 MHz 433Mbps (802.11AC), 300Mbps (802.11N) ; To get best Wi-Fi speed please set Wireless Router "Channel Width" to 2.4G 40MHz 5G 80MHz.

System Requirements:

Linux Driver: ATH10K (Provide driver link only)
Need driver on Windows Server,Windows7,Windows 8, Windows 8.1, Windows 10 (32/64bit)

Package List:

1X FS-AC86; 1X Mini CD;1X User Manual; 2X 5dBi Antenna
1XMounting Screw; 1X Lower Profile Bracket.

3

Analytical Note:

1.PC Can find "Qualcomm Network XXXXX Wireless Network Adapter" means PCs find Wi-Fi Adapter correctly and ready to work.Users do not need to install driver and use it directly. FS-N600 it will not need to install driver on Windows10/8/8.1 (32/64).But Windows XP/Server(32/64) will have to install driver on each system. FS-AC86 users have to install drivers on Windows10/8.1/8/7 and Windows Server(32/64).
2.PCs Can't find "Qualcomm Atheros XXXXX Wireless Network Adapter" or PC can find it in a yellow triangle. Or PC can find a "Ethernet Controller"(Unknown Device) under Other Device in Device Manager. Means users have assembled this card on PCs correctly.And PC have found it, but lack driver on users PCs. Please install drivers in Mini CD.
3. PCs can not find any Wi-Fi Adapter load information. A.Can not find Wi-Fi signal.B.Can not find find "Qualcomm Atheros XXXXX Wireless Network Adapter" or PC can find it in a yellow triangle.C.Can not find a "Ethernet Controller" (Unknown Device) under Other Device in Device Manager. Please re-plug Wi-Fi Adapter into PCI-E slot again or try in other PCI-E slot.

Find Software in Mini CD:

1.FS-N600 works on Windows 10,8.1,8,7,XP and Windows Server(32/64bit). Correct driver"Atheros" file folder in mini CD.

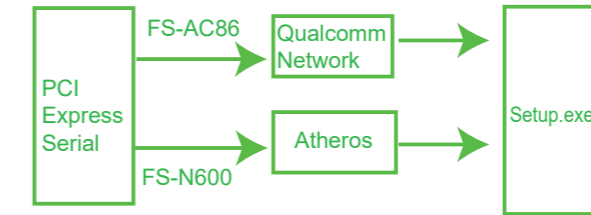
8

How to Get Driver:

1.PCs have CD ROM please open it directly refer install steps as below complete driver installation.
2. If computers can not read CD please try to download correct driver from our site www.febsmart.com or contact us at support@febsmart.com
3.Linux Driver: FS-N600 Qualcomm Atheros ATH9K. FS-AC86 Qualcomm Atheros ATH10K.

Install Driver Software on Windows System:

Step1.Follow the steps as below find correct driver for Wi-Fi adapter in Mini CD or download from our site. FS-AC86 driver file"Qualcomm Networks" FS-N600 driver file"Atheros";



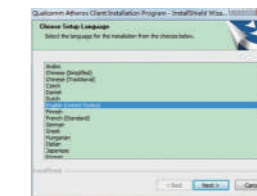
9

Step 2. Double right-click the software and running the software.

1. Double right-click

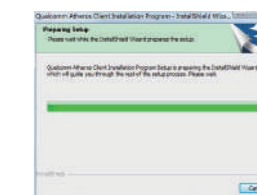


2. Select language

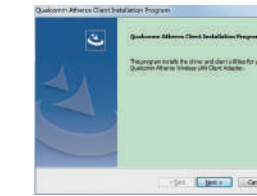


10

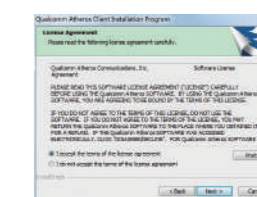
3. Waiting for preparation files ready.



4.Click "Next"



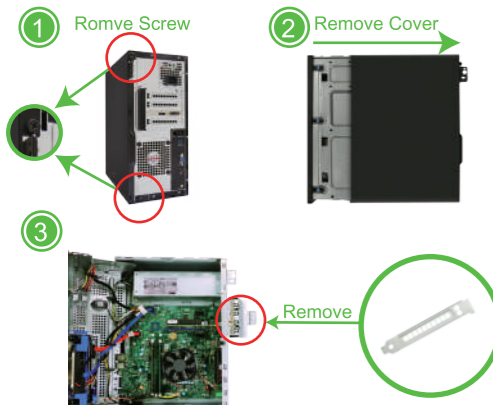
5.Accept the license.



11

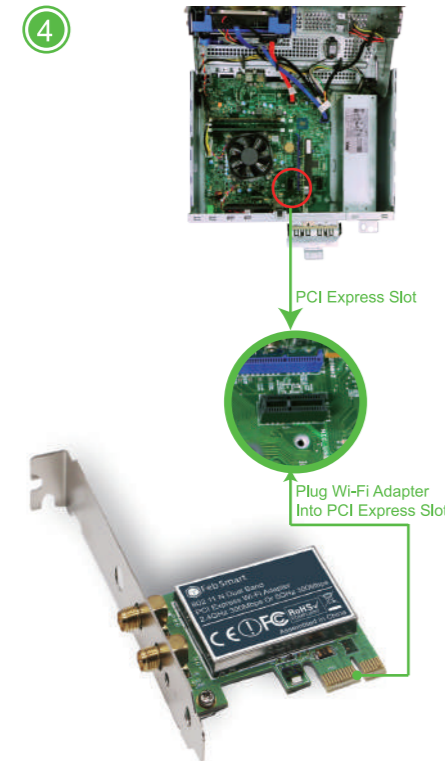
Assemble Wi-Fi Adapter on Desktop Computers:

Step1. Switch OFF, unplug your computer from the main socket, unplug the power cord and other connected peripheral devices. Remove the cover from computer's case.



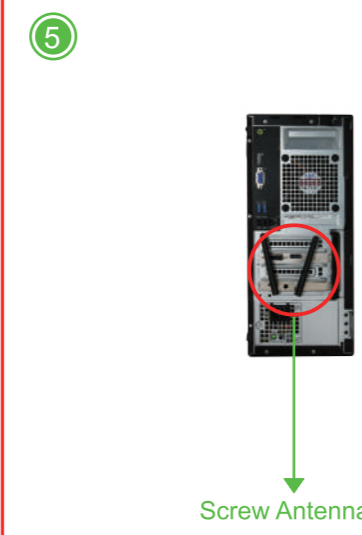
Step2. Find the correct PCI Express Slot ,Insert the wireless network card into an empty PCI-E slot of the motherboard.

4



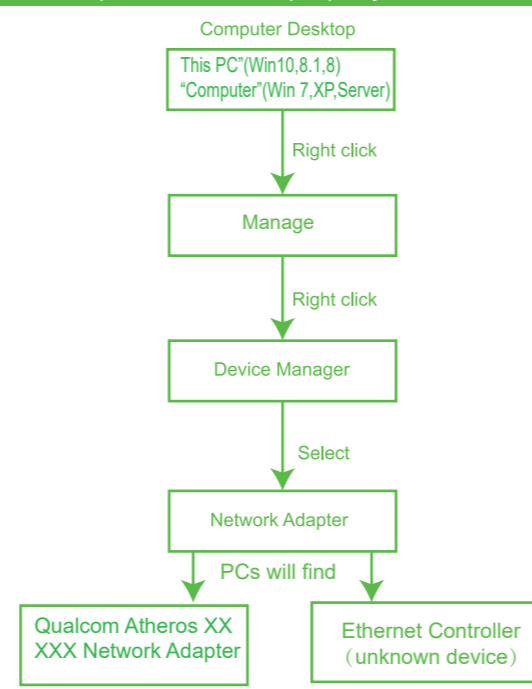
5

Step3.Screw in the antennas included directly to wireless network card. Note: If needed Position of the antennas can be adjusted to improve wireless reception. Reattach the cover of computer case, turn on computer.



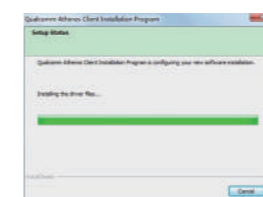
6

Find the Wi-Fi adapter on computers, check if the Wi-Fi adapter assembled properly:

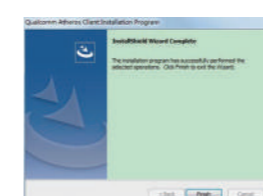


7

6.Waiting for program installation



7.Click "Finish", and using the new wireless network card.



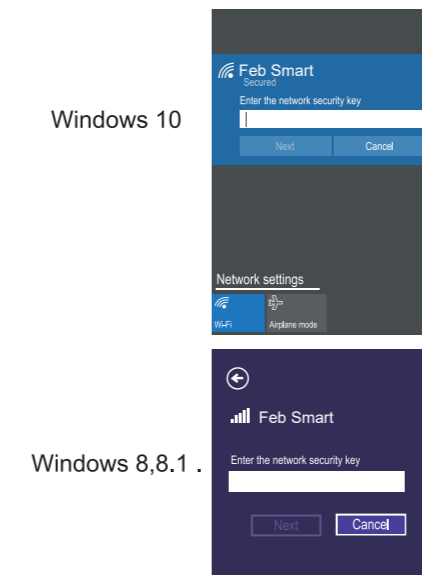
Step3. Connect to internet:

1.Locate the task bar in the bottom right corner of your desktop.
2.Select the Wireless icon as below on each system.

12

Windows 10 Windows8, 8.1 Windows7

3. Select the Wi-Fi signal, fill correct password and connect to it. Afterwards enjoy fast internet.



13

Windows 7



Trouble Shooting Analyze:

1. Why this card can't connect to 5G or PCs can't find 5G signal on my PC?

PCs find 5GHz signal but can't connect: 1.Connect to 2.4G first, make sure it is connected. 2. Find your 5G signal and connect, most of them will work. PCs cannot find my 5G signal but 2.4G works: 1.Connect 2.4G signal first. 2. Restart PC or re-plug this Wireless card. Or in Device Manager-Remove this card and install driver again for it. Then PCs will find 5GHz and will allow PCs connect.

2. Why my PCs always get poor signal or drops sometimes?

A. Test Wi-Fi signal in PC area(same spot, same height) by cell phone check if PC was placed in a Wi-Fi dead zone if yes, please change location for PCs.
B. If the distance little long PCs will get poor signal or only 2.4G signal. To improve this please considers change the PCs or Wireless AP's location. Or you can buy a more power Wi-Fi Antenna for it.

14

3. Why my PC find 2.4G signal only?

PCs was placed too far away from Router.5GH band will support more data speed by covers a small area. Wireless AP or Router's signal may cannot reach PCs location. Considers decrease the distance between Router and PC.

4. I am a Linux user how can I get source code to compile my PC?

Go to open the mini CD in the package find ATH9K links get source code online. Or go to our site download ATH9K driver.

5. Windows10,8.1,8 system cannot load this card automatically how to fix this ?

Just need to install the drivers in mini CD, device will works properly. If do not have CD ROM, please go to our site download drivers for the models in your hand.

6. My PCs find few signals only, not as expected performance, how to fix this?

Please remove Wi-Fi card from PCs and install it again. At the same time please screw Wi-Fi antenna and make sure it is screwed correctly. Most of time it is Wi-Fi antenna wasn't screwed properly.

7. There a PCIE X16 port only,is it working on this ?

Absolutely YES,Works on PCIE X1, X4, X8, X16 slot

8. I have installed correct driver on my PCs but no Wi-Fi ?

Please check if your PCs was installed other version driver. If yes please delete that driver and re-install our driver.

9.Where I can find support from Feb Smart ?

Get prompt tech-support:www.febsmart.com or support@febsmart.com

15

105G铜版纸+彩色印刷+折叠

成品尺寸: 110x85mm